



**Market Indicators**

TOP GAINER	%	TOP LOSER	%
SIEMENS	5.52	HEROMOTOCO	(2.62)
DLF	2.97	IDFC	(1.53)
TATAPOWER	2.38	BPCL	(1.37)
HDFC	2.26	BAJAJ-AUTO	(1.35)
ASIANPAINT	1.93	WIPRO	(1.30)

**Broder Indices**

Index	Closing Value	Change in (Pts)	Change (%)
MID CAP	6501.50	14.35	0.22
SMALL CAP	6351.34	17.56	0.28
IPO	1677.51	(3.76)	(0.22)

**Sectoral Indices**

AUTO	10827.25	(48.67)	(0.45)
BANKEX	13945.26	(34.06)	(0.24)
CD	7163.57	(100.07)	(1.38)
CG	9888.68	58.32	0.59
FMCG	5758.56	(5.48)	(0.10)
HC	8101.09	42.58	0.53
IT	6963.97	(47.01)	(0.67)
METAL	9405.46	(53.22)	(0.56)
OIL & GAS	8981.66	(40.63)	(0.45)
POWER	1800.33	9.30	0.52
PSU	6986.12	(10.04)	(0.14)
REALTY	2101.78	27.38	1.32
TECK	4000.66	(21.30)	(0.53)

**Currency Movement**

USDINR	54.29	0.11↓
EURINR	70.61	0.63↓
GBPINR	81.09	0.48↓
JPYINR	56.52	0.54↓

**Market Breadth**

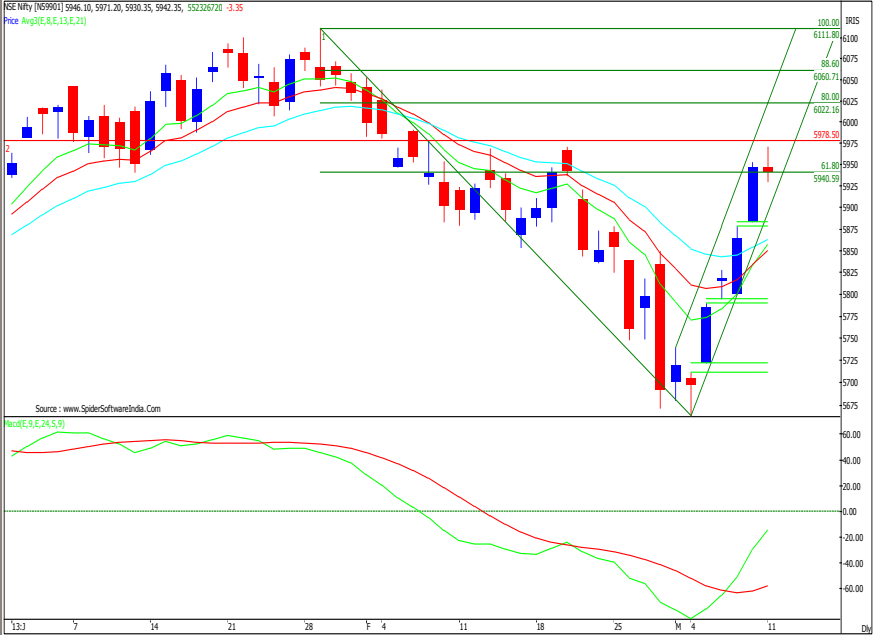
Exchange	Advances	Declines	Unchanged
BSE	1395	1474	134
NSE	733	762	93

**MARKET STATISTICS**

ACTION	FII (₹) Cr.	DII (₹) Cr.
CASH BUY	3240.64	830.63
CASH SELL	2252.42	1617.21
(Provisional)	+988.22	(786.58)

FII Derivatives	Buy (Cr.)	(Sell Cr.)	Net (Cr.)
Index Futures	1325.48	1393.55	(68.06)
Index Options	16550.90	14375.47	2175.43
Stock Futures	1360.97	980.09	380.88
Stock Options	926.71	1026.34	(99.63)
Total			+2388.62

**Exhibit 1: Daily Nifty Chart**



**NIFTY OUTLOOK**

Yesterday the Nifty opened with flat note and traded highly volatile, Nifty made high of 5971.20 and not sustained at higher level witnessed which brought it down and registered low of 5930.35 levels and finally at end of the day it closed at 5942.35 levels with minor loss of 3.35 points.

- ◆ The price action has formed high wave candle with small body with long upper shadow indicates selling pressure at higher levels. The indices precariously closed above the important fibonacci ratio 61.80 (6111.80 - 5663.60). Going forward indices facing the resistance near the multiple top (Double Top) 5971 the time difference between these 2 tops is 13 trading sessions.
- ◆ In today's session indices completed retracing the last leg of the decline from 5971 - 5663 consuming five trading session. This highlights the impulsive nature of current pullback rally. Such last declining leg consumed nine session and a faster retracement of the same would confirmed if Nifty closed above 5971 in coming couple of sessions, such event likely to signal change of guard for short term perspective and bring back into the reckoning.
- ◆ The Nifty has maintained a higher high higher low sequence in the last six sessions which turns immediate bias will positive as long as the previous session's low is protected. The Immediate support is placed in the Daily Gap area between 5883 & 5878 while key near term support is placed around 5825 followed with 5840 - 5883 (Midpoint of the 8th March 2013 Weekly Bullish Candle body) on a Weekly Close basis.
- ◆ For today trend deciding level for Nifty placed at 5948 if Nifty trade above this level then it may go up to 5980 - 5990 - 6020 level. However if Nifty trade below 5948 then it may find immediate support at 5930 level any violation of such support would signal further decline up to 5900 - 5880 level.

**Indian Index Movement**

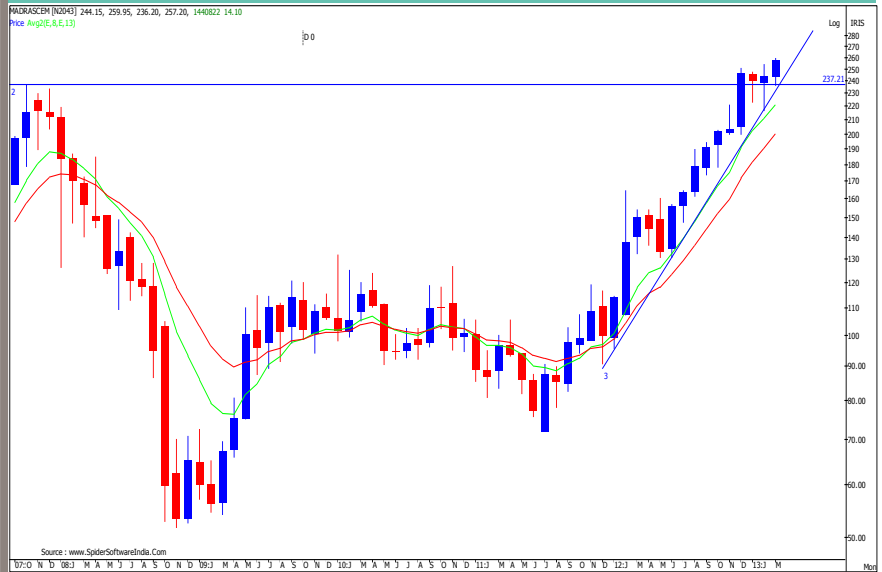
MOVEMENT	SENSEX	NIFTY	SMA	SENSEX	NIFTY
OPEN	19679.88	5946.10	5 Days	19428	5871
HIGH	19754.66	5971.20	20 Days	19343	5850
LOW	19602.71	5930.35	48 Days	19626	5942
CLOSE	16946.21	5942.35	100 Days	19286	5853
CHANGE IN PTS	(37.02)	(3.35)	120 Days	19189	5824
CHANGE IN %	(0.19)	(0.06)	200 Days	18939	5579

\*Source: BSE, NSE, BI, Capital Market & rbi.org.in



SYMBOL : MADRASCEM  
 RECOMMENDATION : BUY  
 INITIATION RANGE : 258 - 250  
 STOPLOSS : 236  
 TARGET : 274 & 282

Exhibit 2: Monthly Chart of Madras Cement



On weekly and monthly chart the prices continue to display characteristics of strong uptrend in progress and in today's trade prices notes at all time high reading once it managed to break past November 2007 high of 253. The stock price continue to respective and trade above the rising demand line. The breakout of 253 price of November 2007 would likely to act as a booster to drive the further upmove in uncharted territories. Hence we recommend to Buy the Madrascem at cnp 257.20 or decline upto 250 with protective stop loss of 236 on closing basis for target of 274 and 282 or even higher also.

Technical Track

\*Source: BSE, NSE, BI, Capital Market & rbi.org.in



Symbol	PIVOT TABLE			Simple Moving Average				
	S2	S1	Pivot Point	R1	R2	5 Days	20 Days	55 Days
SENSEX	19516	19581	19668	19733	19820	19428	19343	19604
NIFTY	5907	5925	5948	5966	5989	5871	5850	5939
BANK NIFTY FUTURE	12093	12144	12219	12270	12345	12045	12087	12455
NIFTY FUTURE	5923	5940	5965	5982	6007	5892	5861	5956
<b>NIFTY COMPONENTS</b>								
ACC	1242	1255	1265	1278	1287	1261	1272	1332
AMBUJACEM	183	185	187	189	190	190	193	196
ASIANPAINT	4599	4678	4727	4805	4854	4581	4492	4449
AXISBANK	1371	1386	1407	1422	1443	1403	1412	1409
BAJAJ-AUTO	1946	1966	1994	2014	2041	1988	1989	2060
BANKBARODA	723	732	739	749	755	728	739	812
BHARTIARTL	315	318	322	326	330	321	315	327
BHEL	203	204	206	208	210	204	205	215
BPCL	391	395	403	407	415	394	388	391
CAIRN	303	305	307	309	311	301	305	320
CIPLA	385	389	393	397	400	387	379	399
COALINDIA	315	318	323	325	330	318	329	344
DLF	271	279	284	291	296	275	269	257
DRREDDY	1793	1803	1811	1821	1829	1809	1812	1865
GAIL	337	341	346	351	356	338	336	350
GRASIM	3001	3019	3034	3052	3066	3027	3021	3060
HCLTECH	765	774	780	789	795	766	726	685
HDFC	804	818	827	841	850	795	798	810
HDFCBANK	646	650	655	660	665	644	654	660
HEROMOTOCO	1654	1676	1712	1734	1770	1689	1682	1773
HINDALCO	98	99	100	102	103	101	105	117
HINDUNILVR	433	436	440	443	447	440	454	480
ICICIBANK	1112	1122	1137	1147	1161	1118	1103	1145
IDFC	155	156	158	160	162	155	155	166
INFY	2895	2921	2955	2981	3015	2962	2877	2710
ITC	295	296	298	299	301	293	296	293
JINDALSTEL	356	359	364	368	373	357	365	410
JPASSOCIAT	75	76	78	79	80	75	72	84
KOTAKBANK	659	664	671	675	682	662	663	658
LT	1433	1472	1495	1534	1557	1460	1436	1520
LUPIN	594	597	603	607	612	599	597	597
M&M	883	898	910	925	937	896	891	906
MARUTI	1393	1405	1427	1439	1461	1430	1452	1519
NTPC	148	149	149	150	151	149	150	153
ONGC	319	322	326	329	333	321	320	311
PNB	798	806	814	822	830	808	829	861
POWERGRID	108	109	110	111	112	109	109	111
RANBAXY	400	404	408	412	416	401	407	453
RELIANCE	828	836	848	857	869	839	844	861
RELINFRA	421	425	432	437	444	430	458	504
SBIN	2179	2192	2206	2219	2234	2176	2199	2349
SESAGOA	160	163	167	170	173	163	163	180
SIEMENS	518	540	556	578	594	526	544	613
SUNPHARMA	807	820	830	843	852	812	799	757
TATAMOTORS	296	299	303	306	310	304	299	306
TATAPOWER	97	99	100	102	104	99	97	103
TATASTEEL	351	355	359	363	367	353	362	396
TCS	1538	1552	1571	1585	1604	1568	1489	1380
ULTRACEMCO	1881	1889	1898	1906	1915	1896	1911	1929
WIPRO	430	435	442	447	454	442	419	410

URJA INVESTMENT PTE. LTD.

Private & Confidential



**Economic Calendar**

Importance	IST	Location	Indicator	Unit	Forecast	Previous	Actual
Low	10:30	Japan	Consumer Confidence		43	43.3	
Medium	11:00	India	Industrial Production January 2013	%	1.2	0.60	
Low	12:30	Euro Zone	German Final CPI (M o M)	%	0.6	0.6	
Low	12:30	Euro Zone	German WPI (M o M)	%	0.4	0.3	
High	15:00	Britain	Manufacturing Production (M o M)	%	0.1	1.6	
Medium	12:30	Britain	Trade Balance	B	-8.8	-8.9	
Low	12:30	Britain	Industrial Production (M o M)	%	0.1	1.1	
Low	17:00	USA	NFIB Small Business Index		91.3	88.9	
Medium	20:30	Britain	NIESR GDP Estimate	%		0	
Medium	23:30	USA	Federal Budget Balance	B	-220	2.9	



**DISCLAIMER:** This document is not for public distribution and has been furnished to you solely for your information and must not be reproduced or redistributed to any other person. Persons into whose possession this document may come are required to observe these restrictions.

The information and views in this report, our website & all the service we provide are believed to be reliable, but we do not accept any responsibility (or liability) for errors of fact or opinion. Users have the right to choose the products that suits them the most. Investment in Stocks has its own risks. Sincere efforts have been made to present the right investment perspective. The information contained herein is based on analysis and up on sources that we consider reliable. We, however, do not vouch for the accuracy or the completeness thereof. This material is for personal information and we are not responsible for any loss Incurred based upon it & take no responsibility whatsoever for any financial profits or loss which may arise from the recommendations above.

Recipients of this material should rely on their own investigations and take their own professional advice. Each recipient of this document should make such investigations as it deems necessary to arrive at an independent evaluation of an investment in the securities of companies referred to in this document including the merits and risks involved), and should consult their own advisors to determine the merits and risks of such an investment. Price and value of the investments referred to in this material may go up or down. Past performance is not a guide for future performance. Certain transactions - futures, options and other derivatives as well as non-investment grade securities - involve substantial risks and are not suitable for all investors. Reports based on technical analysis centers on studying charts of a stock's price movement and trading volume, as opposed to focusing on a company's fundamentals and as such, may not match with a report on a company's fundamentals.  
All the Rights are reserved.

Contact Us: [research@urjatrade.com](mailto:research@urjatrade.com)

Web: [www.LAAVLE.com](http://www.LAAVLE.com)

Registration: NSE - CASH INB230696132 | NSE - FO INF230696132 | BSE - CASH INB010696137

**URJA INVESTMENT PTE. LTD.**

Private & Confidential